

# FORCE 8™ TWIN CARTRIDGE HALF FACE RESPIRATOR

PRODUCT CODE: BHT003-0L5-000

ONE OF THE LIGHTEST, MOST WELL BALANCED HALF FACE MASKS AVAILABLE

TECHNICAL  
SPECIFICATION

RESPIRATORY PROTECTION

## INSTRUCTIONS FOR USE

Place the respirator over the mouth and nose, then pull the harness over the crown of the head

Take the bottom straps in both hands, place them at the back of the neck and hook them together

Tighten the top straps first by pulling on ends to achieve a comfortable and secure fit

Tighten bottom straps using either front or rear adjustments (Strap tension may be decreased by pushing out on back side of buckles)

Perform a positive and/or negative pressure fit check

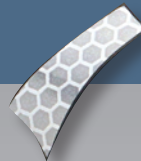
### FACEPIECE:

Thermoplastic Elastomer  
Padded for extra comfort over prolonged use, and moulds to face shape for excellent seal



### CR2 REFLECTIVITY:

Reflective strips create increased visibility in low-light environments for added safety



### FILTER:

Force 8® Filters available with low profile angle design for minimal visual impairment



## CLEANING & MAINTENANCE

Cleaning is recommended after each use. Remove the gas/vapour and/or particle filters

Clean the facepiece (excluding filters) by immersing in warm cleaning solution, water temperature not to exceed 50°C and scrub with soft brush until clean. Add neutral detergent if necessary. Do not use cleaners containing lanolin or other oils

Rinse in fresh, warm water and air dry in a non-contaminated atmosphere

Respirator components, especially exhalation valve and seat, should be inspected prior to each use. A respirator with any damaged or deteriorated components should be discarded

The cleaned respirator should be stored away from contaminated areas when not in use



## CONFORMITY

Tested to the relevant European Standards (EN140, EN141, EN143, EN14387) and have met the requirements shown below:

Facepiece EN140

Filter Performance EN14387:2004

Filter Performance EN143:2000



# FORCE8™ TWIN CARTRIDGE HALF FACE RESPIRATOR

PRODUCT CODE: BHT003-0L5-000

ONE OF THE LIGHTEST, MOST WELL BALANCED HALF FACE MASKS AVAILABLE

TECHNICAL SPECIFICATION

RESPIRATORY PROTECTION



## DIMENSIONS OF OUTER PACKAGING

Quantity: 1

Weight: 95g (Approx.)



HEIGHT:  
150mm

LENGTH:  
130mm

WIDTH:  
95mm

## FILTER INFORMATION

DESCRIPTION	FILTER	FILTER COLOUR	QTY
Force8® - 2 x F8-110 Organic Vapour Filter, Capacity 1	A1		80
Force8® - 2 x F8-120 Organic Vapour Filter, Capacity 2	A2		80
Force8® - 2 x F8-123 Organic Vapour & Dust Cartridge	A2P3		80
Force8® - 2 x F8-510 Organic & In-Organic Cartridge	AB1		80
Force8® - 2 x F8-710 Combination Vapour Cartridge	ABEK2		80
Force8® - 2 x 003 Dust Cartridge	P3		80



## DIMENSIONS OF RESPIRATOR

Weight without filters: 85g (Approx.)

Weight with filters: 355g (Approx.)

## FACE FITTING

Respiratory protection is only effective if it is correctly selected, fitted and worn throughout the time when the wearer is exposed to respiratory contaminants

## LIMITATIONS OF USE

These respirators do not supply oxygen

Do not use in oxygen deficient atmospheres

Do not use for respiratory protection against atmospheric contaminants which have poor warning properties, are unknown or immediately dangerous to life and health or against chemicals which generate high heats of reaction with chemical filters

Do not modify or alter this device

The assembled respirator may not provide a satisfactory face seal with certain physical characteristics (such as beards or large side burns) resulting in leakage between the facepiece and the face, the user assumes all risks of bodily injury which may possibly result

Do not use with unknown concentrations of contaminants

Use strictly in accordance with face piece and filter instruction leaflet